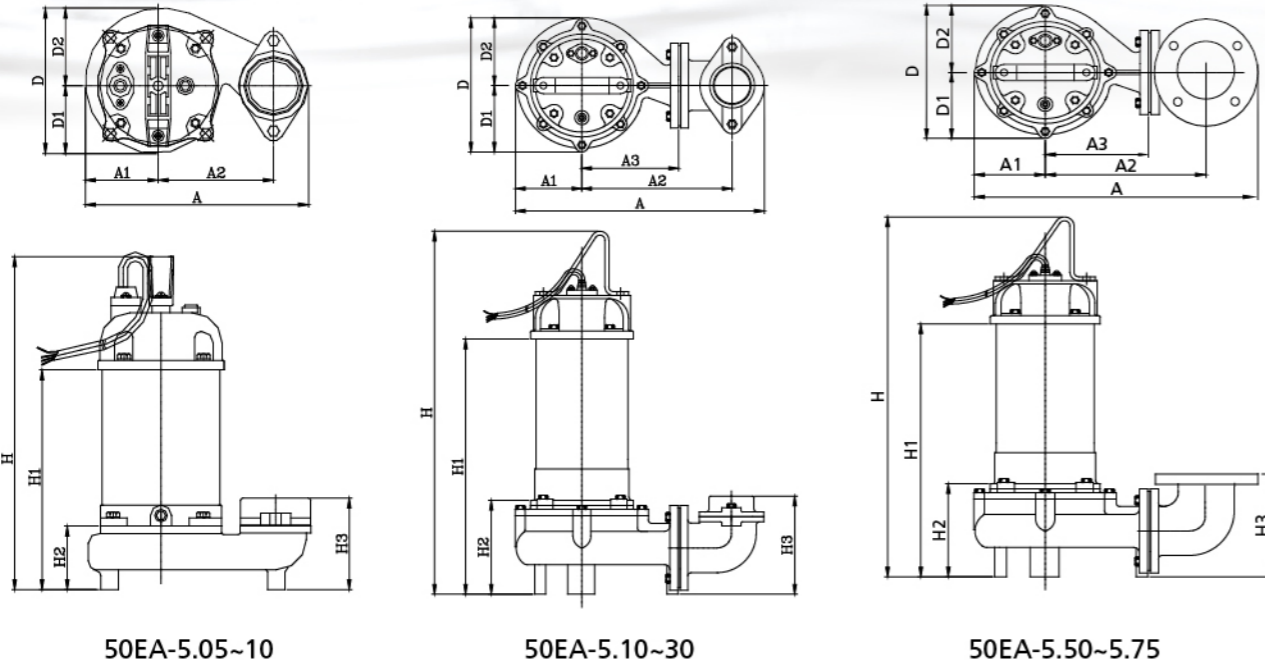


EA-Series Dimensions



Dimensions (mm)											
Type	A	A1	A2	A3	D	D1	D2	H	H1	H2	H3
50EA-5.05	228	73	155	NA	150	69	81	412	297	117	138
50EA-5.10	228	73	155	NA	150	69	81	487	345	117	138
* 50(80)EA-5.10	312	82	183	101	163	76	87	494	351	124	156
50(80)EA-5.20	390	103	235	151	210	105	105	532	400	150	152
50(80)EA-5.30	390	103	235	151	210	105	105	552	420	150	152
80(100)EA-5.50	470	110	257	170	218	98	120	633	468	160	206
80(100)EA-5.75	470	110	257	170	218	98	120	673	508	160	206

- » Note1 : Automatic models are available in single-phase versions(0.5~2HP).
- » Note2 : Q.D.C.(Quick Discharge Connection) is available for all models.
- » Note3 : *50(80)EA-5.10 is Elbow Type.



Official agent Benelux

EVAK PUMP TECHNOLOGY CORP.

No. 551, Zhongshan Rd., Qingshui Dist., Taichung City 436, Taiwan.
TEL: +886-426-233556 Fax: +886-426-235559

VA PEA-14011



EA

SERIES 50HZ

Submersible Dredging Pump



www.evak-pumps.com

EA SERIES 50HZ

Submersible Dredging Pump

Feature

- / Vortex impeller with agitator
- / Non clog operation
- / Double mechanical seals in Si. Ca
- / Reliable shaft sealing
- / Automatic operation (Optional)

Application

- / Dredging
- / High concentration slurry



50EA-5.05

50(80)EA-5.20

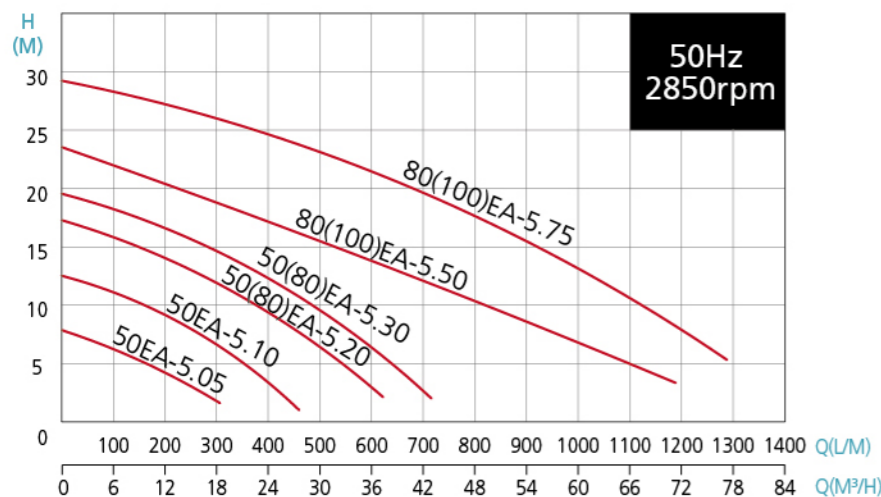
Specifications

Liquid Temperature	0~40°C (32~104°F)	
Submersible depth	10M	
Motor Part	Frequency	50Hz
	Pole	2 Pole
	Type	Dry Motor
	Insulation	Class E
	Protection	IP 68
Pump Part	Protector	Auto-cut
	Bearing	Ball Type
	Mechanical seal	Dual. Mechanical Seal
Impeller	Semi-Open	



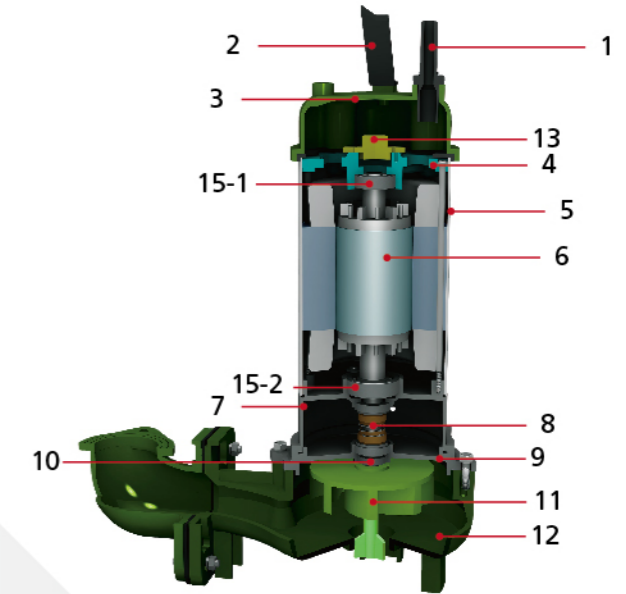
Impeller with powerful agitator

Performance Curve

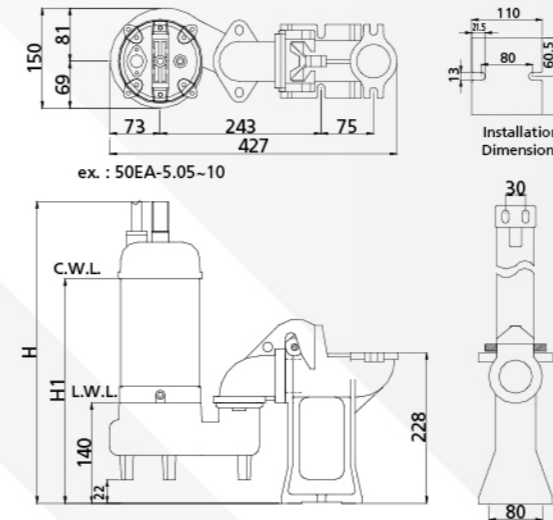


Parts and Material List

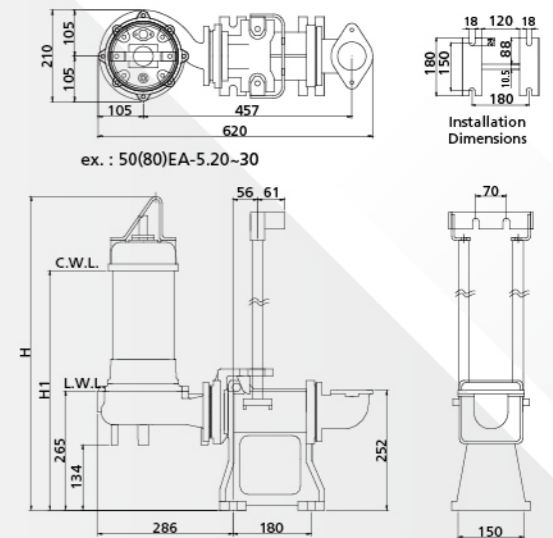
No	Part	Material
1	Cable	H07RN-F /SJTOW/STOW
2	Handle	Nylon 6/5S41
3	Motor Cover	Nylon 66/FC 200
4	Bracket	FC 200
5	Motor Housing	SUS 304
6	Shaft with Rotor	SUS 410
7	Oil Chamber	FC 200
8	Double Mech.Seal	Upper : CA / CE Lower : SIC / SIC
9	Seal Housing	FC 200
10	Oil Seal	NBR
11	Impeller with Agitator	Impeller : FC 200 Agitator : SUS 316
12	Pump Casing	FC 200
13	Protector	KLIXON
15-1	Upper Bearing	NTN
15-2	Lower Bearing	NTN



EA-Series with QS / QM



EA with QS					
Output		Discharge		Dimensions(mm)	
HP	KW	Inch	mm	H	H1
0.5	0.37	2"	50	434	319
1	0.75	2"	50	509	367



EA with QM					
Output		Discharge		Dimensions(mm)	
HP	KW	Inch	mm	H	H1
1	0.75	2"	50(80)	625	482
2	1.5	2"(3")	50(80)	715	545
3	2.2	2"(3")	50(80)	735	565
5	3.7	3"(4")	80(100)	775	597
7.5	5.5	3"(4")	80(100)	815	637

Data Chart

Type	Output		Discharge	F.L.A.		Rated		Maximum		Cable	Free Passage	Weight	Q.D.C.
	HP	KW		1ø 230V	3ø 400V	Head m	Cap. LPM	Head m	Cap. LPM				
50EA-5.05	0.5	0.37	2"	4	1.2	6	150	8	320	10	10	13.4	QS-50
50EA-5.10	1	0.75	2"	6	2	9	200	12.5	460	10	10	18.2	QS-50
50(80)EA-5.20	2	1.5	2"(3")	11.3	3.5	10	350	17.5	650	10	15	35	QM-80
50(80)EA-5.30	3	2.2	2"(3")	-	5.2	11	450	19.5	750	10	15	36.1	QM-80
80(100)EA-5.50	5	3.7	3"(4")	-	8.6	10	800	23.5	1200	10	12.5	56.3	QM-100
80(100)EA-5.75	7.5	5.5	3"(4")	-	12	12	1040	29.5	1400	10	12.5	62.3	QM-100

- » 50EA-5.05 : Flange Type
- » 50EA-5.10 : Flange Type / Elbow Type (2" or 3" /Fit with Q.D.C. QM-80)
- » 50(80)EA-5.20~30 : Elbow Type
- » 80(100)EA-5.50~75 : Elbow Type